



Engineering Excellence

BioChambers, formerly operating as Enconair, has been providing tailor-made, premium growth chambers and rooms to bio scientists around the world for over 30 years. We recently changed our name to better reflect the professions we serve, and to more clearly communicate information about our products while emphasizing their superior technological capabilities.

At BioChambers, we're engineered to lead.



Knowledge Inside and Out

Expect to Grow

Our BioChambers team will design and propose the best selection of chambers to maximize the growth area in your facility. Because we focus on solutions, you can expect growing success!

Big FOOT™ **SERIES**

Our most popular series of products is found in research labs throughout the world. Bigfoot™ features the best use of space. Bigfoot™ means more growth area . . . more experiments . . . more results.



BioBuild™

BioBuild™ maximizes your growth area. Pack them together like dominos, side by side and back to back.

BioRoom™

BioRoom™ enables scientists to conduct multiple experiments concurrently. Available in standard, specialized, and convertible rooms.





Expect to Know

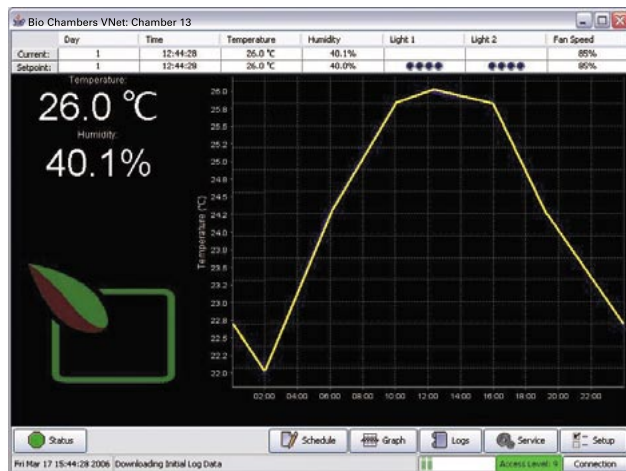
Because everything BioChambers does is about engineering excellence you can confidently expect to know that your experiments are protected.

Using our Research Saver™, VNet™ and VNet Viewer™ monitoring systems will position you for success.



Available with every chamber and room is a proprietary monitoring system unique to the industry that includes the following features:

- A network of sensors which monitor both building services and the critical parameters of your experiment
- Multiple avenues of communication to ensure a prompt response
- E-mail and text messaging that can be “pushed” to a cell phone, pager, Blackberry® or similar device
- Remote, secure access—from anywhere



- A state-of-the-art, independent controller providing accurate control of light, temperature, humidity and CO₂

VNet Viewer™

- Instantly shows you the status of all your experiments from your own computer
- Allows you to view and access any individual chamber with a click of the mouse

Bio Chamber	Temp	Humidity	CO2	Lamp 1	Lamp 2	Lamp 3	Lamp 4	Fan	Status
Actual Chamber 10	22.9 °C	80.7%		••••	••••	••••	••••	100%	●
Setpoint Chamber 10	23.0 °C	90.0%		••••	••••	••••	••••	100%	●
Actual Chamber 11	18.0 °C	82.5%		••••	••••	••••	••••	100%	●
Setpoint Chamber 11	18.0 °C	90.0%		••••	••••	••••	••••	100%	●
Actual Chamber 12	23.3 °C	39.8%		••••	••••	••••	••••	75%	●
Setpoint Chamber 12	23.3 °C	40.0%		••••	••••	••••	••••	85%	●
Actual Chamber 13	26.0 °C	39.8%		••••	••••	••••	••••	85%	●
Setpoint Chamber 13	26.0 °C	40.0%		••••	••••	••••	••••	85%	●
Actual Chamber 14	26.0 °C	40.5%		••••	••••	••••	••••	85%	●
Setpoint Chamber 14	26.0 °C	40.0%		••••	••••	••••	••••	85%	●
Actual Chamber 16	23.1 °C			••••	••••	••••	••••	85%	●
Setpoint Chamber 16	23.0 °C			••••	••••	••••	••••	85%	●

Your BioChambers team is always available to support you in your drive for success.



477 Jarvis Avenue

Winnipeg, Manitoba

Canada R2W 3A8

Toll Free: 800.361.7778

Tel 204.589.8900

Fax 204.582.1024

www.biochambers.com

Knowledge Inside and Out